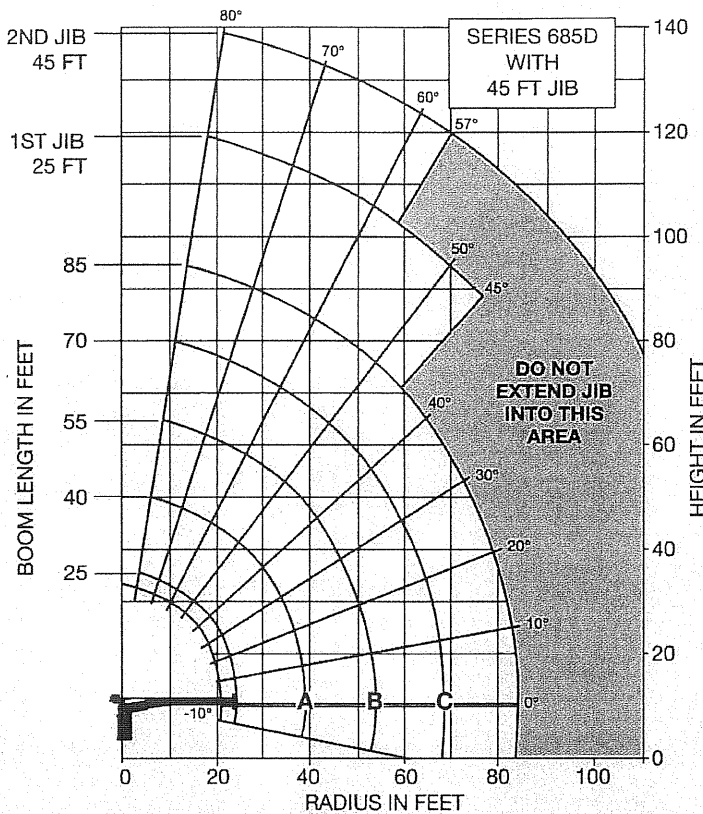


# 600D Capacities



## Load Rating Chart: Model 685D with 45-ft jib

Series 600D Load Rating Charts are available for all Model 638D, 647D, 649D, 657D, 675D and 685D cranes. National will send you a chart by FAX or mail on request - or you may secure needed load rating information through your nearest National dealer.



### Caution:

- Do not operate crane booms, jib extensions, any accessories or loads within 10 ft (3m) of live power lines or other conductors of electricity
- Jib and boom capacities shown are maximum for each section
- Do not exceed capacities at reduced radii
- Load ratings shown on the load rating charts are maximum allowable loads with the outriggers properly extended on a firm, level surface and the crane leveled and mounted on a factory-recommended truck
- Always level the crane with the level indicator located on the crane
- The operator must reduce loads to allow for factors such as wind, ground conditions, operating speeds and their effects on freely suspended loads
- Overloading this crane may cause structural collapse or instability
- Weights of any accessories attached to the boom or loadline must be deducted from the load chart capacities
- Do not exceed jib capacities at any reduced boom lengths
- Do not deadhead lineblock against boom tip when extending boom or winching up
- Keep at least three wraps of loadline on drum at all times
- Use only specified cable with this machine
- Maximum capacity with Burst-of-Speed is 3,000 lb (1361 kg) on single part line

## LOAD RATINGS

Load Radius (Feet)	Loaded Boom Angle	A		B		C		Loaded Boom Angle	85 Ft Boom (Lb)
		25 Ft Boom (Lb)	Loaded Boom Angle	40 Ft Boom (Lb)	Loaded Boom Angle	55 Ft Boom (Lb)	Loaded Boom Angle		
5	78.5	36,000							
8	71	23,000							
10	65.5	19,350	75.5	17,450					
12	60.5	16,550	73	14,650	78	13,550			
14	55	14,550	69.5	12,750	76	11,950			
16	50	13,000	66.5	11,500	74	10,350	78	9,300	
20	34.5	10,500	60	9,400	69.5	8,450	75	7,300	78
25			51	7,600	63.5	6,900	70.5	6,000	74.5
30			41	6,250	55	5,550	65.5	5,100	71
35			28.5	5,050	51	4,800	61.5	4,300	67.5
40					44	4,000	56.5	3,700	63.5
45						35.5	3,450	51.5	60
50						24.5	2,750	45.5	55.5
55								39.5	51
60								32	46.5
65								22	41.5
70									36
75									29
80									20
	0	6,550	0	3,200	0	1,600	0	700	

Load Radius (Feet)	Loaded Boom Angle	25 Ft Jib (Lb)	Loaded Boom Angle	45 Ft Jib (Lb)
25	78	2,800		
30	75.5	2,500	78.5	1,700
35	73	2,200	76	1,500
40	70	1,900	74	1,300
45	67.5	1,600	71.5	1,100
50	64.5	1,400	69.5	1,000
55	61.5	1,200	67	900
60	58.5	1,000	64.5	800
65	55.5	800	62.5	700
70	52	700	59.5	600
75	48.5	600	57	500
80	45	500		

\* Shaded areas are structurally limited capacities.